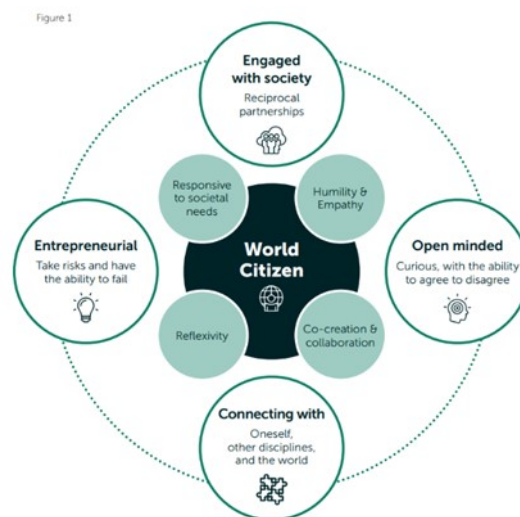


Educational Vision Erasmus University

Erasmus University is an internationally oriented, research-intensive university aiming to create positive societal impact with her education, research, and engagement activities. Our university has an international outlook and is firmly rooted in the region.

We are faced with many societal needs and urgencies, as outlined in Sustainable Development Goals related to climate change, inequalities and the consequences of economic shifts, technological developments, and demographical changes. The complexity of these socio-economic and sustainable urgencies challenges us to create opportunities for an interdisciplinary research- and learning environment that creates positive impact.

To create impact with our education, we address global and local societal needs and urgencies in all our programmes. Students are educated to become experts in their chosen discipline or in a multidisciplinary field of work, to develop a broad perspective on these societal urgencies. Impact-driven education enables students and teachers to apply- and give meaning to- the values essential to being a ‘world citizen’, in line with our name giver Desiderius Erasmus.



Our Erasmian Education builds students' capacity

We focus on student success, thereby enhancing study success in the sense of academic achievement and the personal development and well-being of students. We support students to build a personal and professional (academic) identity and expect students to take responsibility for their activities to reach their goals. They can co-create with partners from other disciplines, cultural backgrounds, and partners from society. Students are taught to critically reflect on- and to be aware of the strengths and limitations of their own assumptions. They can build reciprocal relationships; understand the ‘other’ and contribute to a shared understanding and sustainable approaches to societal needs and urgencies.

Our Erasmian Classroom is inclusive

At Erasmus University, we reach out to, support, and retain students, faculty and staff to create a diverse and inclusive classroom. We strongly contest implicit and explicit barriers that prevent equal access to- and meaningful participation in our academic community. We specifically reach out to our local communities to encourage first generation academic students and all students that might feel distanced to study at Erasmus University. International students are important members of our community since they represent our global context. We are a community that is open-minded and that allows everyone to speak freely, express ideas and opinions, in a respectful way. Though uncomfortable at times, everyone is encouraged to participate and come to new understandings. Our inclusive classroom facilitates education in which all our students and teachers feel a high level of psychological safety.

Our Erasmian teaching

Our Erasmian teachers challenge themselves to use and develop new, effective, and evidence-informed approaches to teaching, learning and assessment of learning. Didactical frameworks on a program level challenge students to

translate their knowledge into a critical understanding of societal urgencies. Their extensive andragogical repertoire allows them to provide an inclusive and safe learning environment in which all students can thrive and reach their full potential.

Erasmian teachers work in teams. Teachers collaborate with mentors, tutors, coaches and/or learning innovators and other support staff, as well as societal partners. Teaching teams are responsive to the personal wellbeing of students, and they support students to develop resiliency, self-regulatory, professional and academic competencies as part of their academic personal and professional identity.

The Erasmian Classroom

We believe on campus education is essential, since it offers the best environment to engage in one's academic, personal, and professional development. Academic education at Erasmus University combines 'traditional' classroom learning aimed at academic, personal, and professional development with innovative learning spaces where students can collaborate, experiment and design. For strategic purposes (for instance pre-master, professional/lifelong learners) and groups otherwise facing very significant hurdles coming to campus, hybrid and online learning environments support flexible learning pathways.

The way we organize our facilities supports engaged learning. To support the on campus learning experience, we make use of online and blended formats. With the help of digital and AI-technologies we enable students to apply their knowledge to contribute to a better understanding of complex societal urgencies. With formative feedback and by using digital resources, students are better informed about their development as online support and -feedback informs them on important decisions for their learning pathways.