

Appendix 1: Scope explanation

Facts and figures

In calculating EUR's carbon footprint, we use the method and standards developed by the [Greenhouse Gas Protocol \(GHG\)](#). The protocol comprises three scopes, with which specific emissions are associated:

- scope 1: direct emissions, over which the university has influence;
- scope 2: direct emissions from power generation, over which the university therefore has influence, but which are emitted outside its organisational boundaries; and
- scope 3: indirect emissions, over which the university has limited influence.

The image below shows the sources of the emissions.

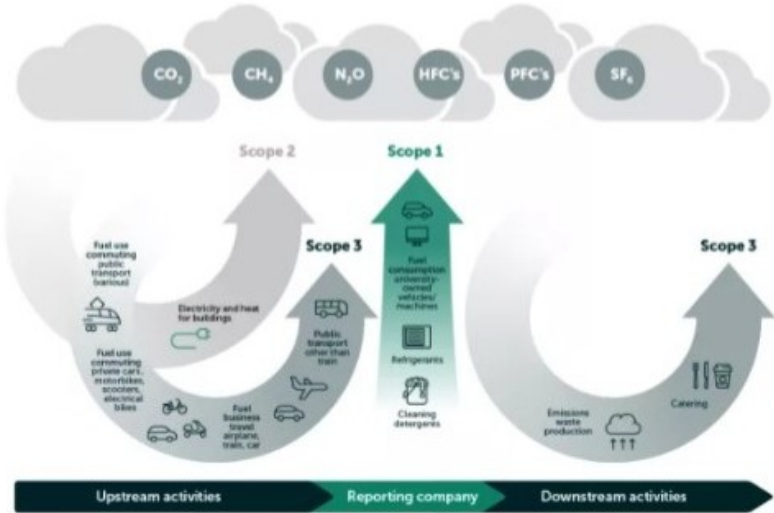


Figure 5.1 Carbon emissions and scopes explained

Figure 1: explanation of the three scopes

Carbon emissions (in tonnes) 2021

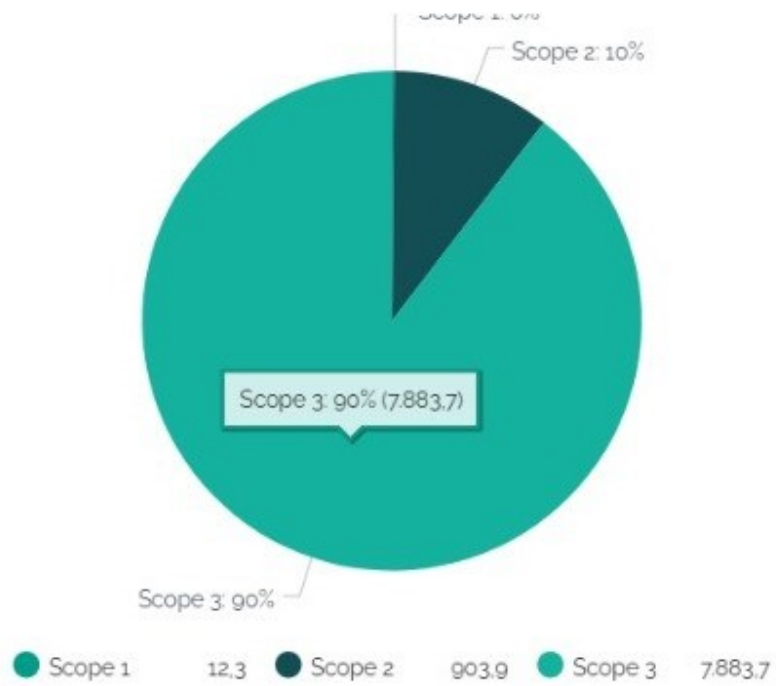
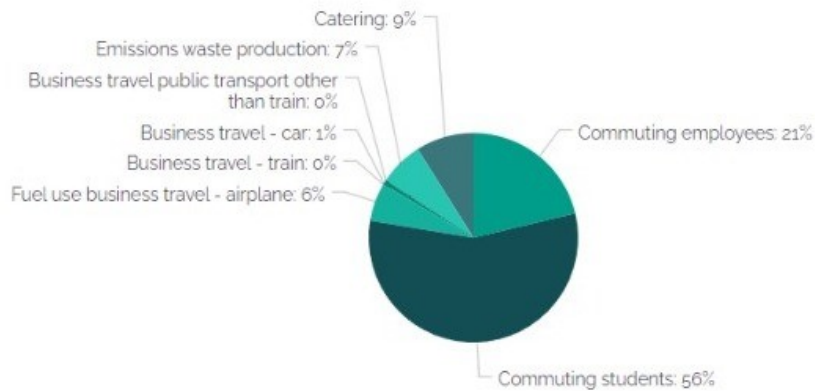


Figure 2: pie chart scope emissions

Carbon emissions Scope 3 (in tonnes) 2021



Commuting employees	563	Commuting students	1493,8
Fuel use business travel - airplane	156,3	Business travel - train	0,1
Business travel - car	17,2	Business travel public transport other than train	1,1
Emissions waste production	181,3	Catering	237

In 2021, the total reported carbon footprint of EUR was 8.800 tons of CO₂. This is equivalent to 61.599 flights to Paris or what almost 440.000 trees can compensate in one year. This is also more than the previous year's numbers. But what does that actually mean?

Figure 3: Detailed pie chart about scope 3 emissions